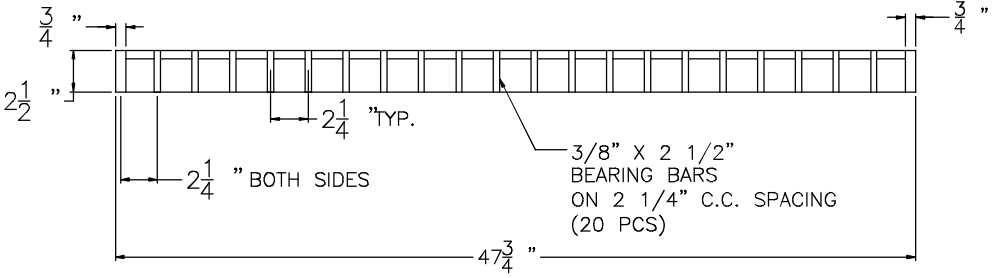
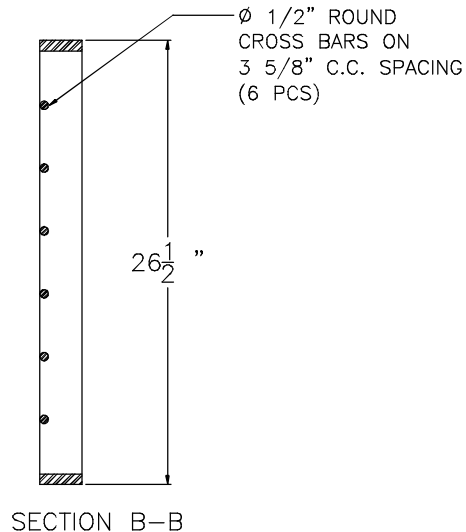
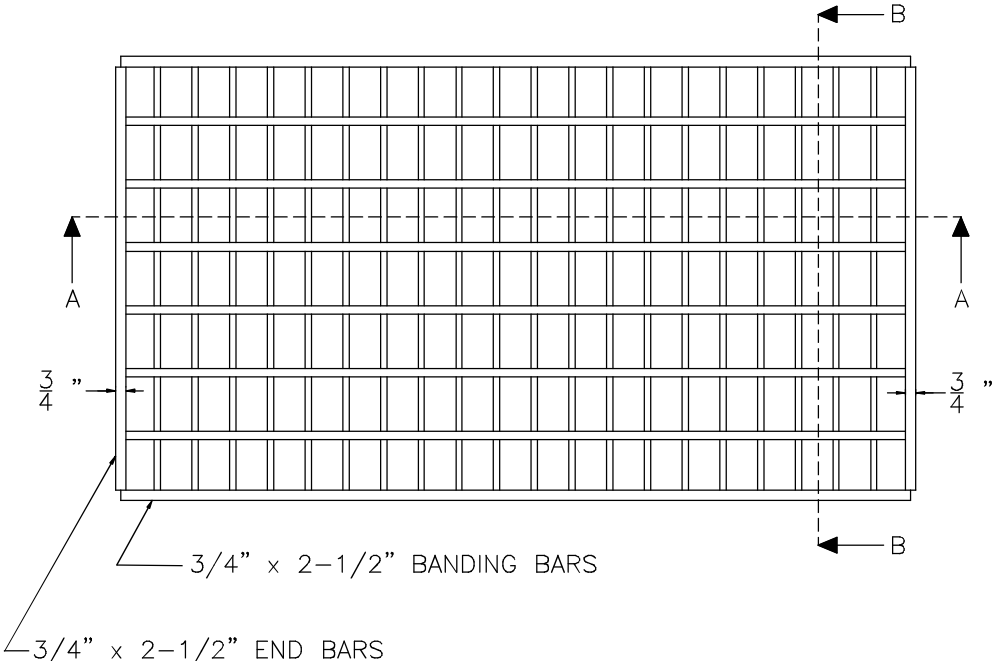
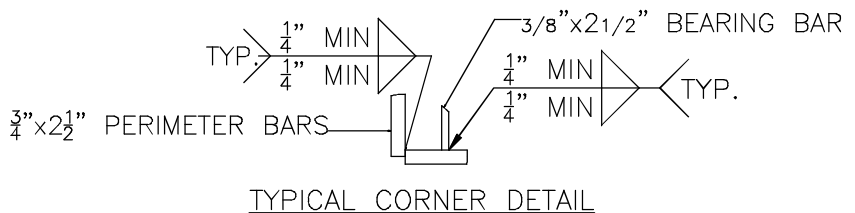


Steel Bike Grate 26-1/2" X 47-3/4" Painted



SECTION A-A



TYPICAL CORNER DETAIL

NOTES:

- 1.) ALL 3/8" x 2 1/2" BEARING BARS SHALL CONFORM TO ASTM-A529 GR.50 STEEL.
- 2.) H-20 WHEEL LOADS PER AASHTO H-20 "STANDARD SPECIFICATIONS FOR HIGHWAY BRIDGES" PER SECTION 3.27.3 OPEN FLOORS. (SPAN ESTIMATED AT 24-1/2").
- 3.) CROSS BARS SHALL CONFORM TO ASTM-A36.
- 4.) ALL 5/8" x 2-1/2" BARS SHALL CONFORM TO ASTM A36.
- 5.) ENTIRE GRATE SHALL BE PAINTED BLACK PER PENNDOT SPECIFICATIONS.

Product Number

PABIKEGRSC

Design Features

- Materials See Notes
- Design Load See Notes
- Open Area 867 Sq. In.
- Coating Painted

Certification

- Est. Weight = 214 lbs
- Additional Certification
- Country of Origin: USA

Drawing Revision

10/08/04 Designer: CJC
09/17/2013 Revised By: MAW

Disclaimer

Weights (lbs/kg), dimensions (inches/mm) and drawings provided for your guidance. We reserve the right to modify specifications without prior notice.

CONFIDENTIAL: This drawing is the property of EJ Group, Inc. and embodies confidential information, registered marks, patents, trade secret information, and/or know-how that is the property of EJ Group, Inc. Copyright © 2011 EJ Group, Inc. All rights reserved.

Contact

800 626 4653
ejco.com